**Acacia**

many varieties, tree or shrub form, differ widely in foliage and growth behavior, wind tolerable, attract birds.

**Anigozanthus**

commonly known as **Kangaroo Paw**, dark green sword-like foliage, blooms late spring to fall, tubular flowers curved at tips like kangaroo paws, attract hummingbirds.

**Anisodonteia**

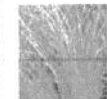
commonly known as **Cape Mallow**, quick growing shrub, rounded freely branching foliage, vast producing hollyhock-like flowers during mild weather.

**Bougainvillea**

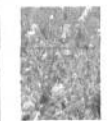
many varieties, vine or shrub form, medium size green or variegated leaves with colorful bracts and thorny stems, differ in vigor and growth habit.

**Callistemon**

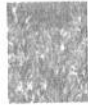
commonly known as **Bottle Brush**, tree or shrub form, narrow long leaves with colorful flowers in dense, bristle-like spikes, fast growing, easy to train.

**Carex**

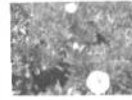
commonly known as **Sedge**, many varieties, grass-like, clumping plants grown for foliage effects.

**Ceanothus**

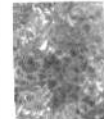
commonly known as **Wild Lilac**, many varieties, shrub or groundcover, most native to California, flowers in spring, differ in soil preference, typically short lifespan of 5-10 years.

**Cistus**

commonly known as **Rockrose**, many varieties, showy spring flowers, fast growing and versatile, tolerant of ocean wind and salt spray, as-well-as desert heat.

**Convolvulus**

shrub, funnel-shaped flowers like morning glory, does well on banks with quick drainage.

**Coprosma**

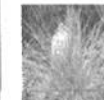
commonly known as **Mirror plant**, shrub or ground cover, shiny and glossy foliage, very easy to maintain.

**Cordyline**

palmlike shrub or tree, swordlike leaves, does well next to swimming pools, partial shade preferred depending on variety.

**Dasyliirion**

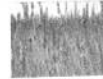
commonly known as **Sotol**, shrub with clumps of narrow spiky, grassy leaves, produce a slender spike with tiny flowers clustered on the tail.

**Festuca**

commonly known as **Fescue**, many varieties of grasses, used for erosion control and foliage effect.

**Grevillea**

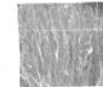
many varieties, shrub or tree form, have fine textured foliage, slender curved flowers in dense clusters, sensitive to high levels of salt or phosphorus in soil.

**Lavandula**

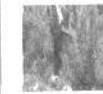
commonly known as **Lavender**, many varieties, shrub or ground cover, grayish aromatic foliage, fragrant lavender flowers, can also be used in herb gardens.

**Nandina**

commonly known as **Heavenly Bamboo**, slow to moderate growing shrub, colorful new lacy foliage that fades to green as it matures, some shade preferred in desert areas, dramatic with night lighting.

**Phormium**

commonly known as **New Zealand Flax**, dramatic foliage composed of swordlike, colorful leaves, color fades as leaf matures, very versatile, can be used as points of interest near pools, salt air or ocean sprays, wind tolerant.

**Rosmarinus**

commonly known as **Rosemary**, shrub, ground cover and herb, narrow aromatic leaves, small clusters of flowers in winter/spring, tolerant of ocean sprays and desert, attractive to birds.

**Salvia**

commonly known as **Sage**, many varieties, shrub, ground cover, herb and bedding plant, aromatic, whorls of two-lipped flowers are distinctly spaced on flower stalks.

**Tagetes**

commonly known as **Marigold**, many varieties, shrub or plant, ferny aromatic foliage, flowers blooms early summer until fall.

**Tulbaghia**

commonly known as **Society Garlic**, plant, narrow leaves in broad clumps, cluster of star shaped flowers, evergreen in mild climates, blooms most of the year, peaks in spring/summer.