

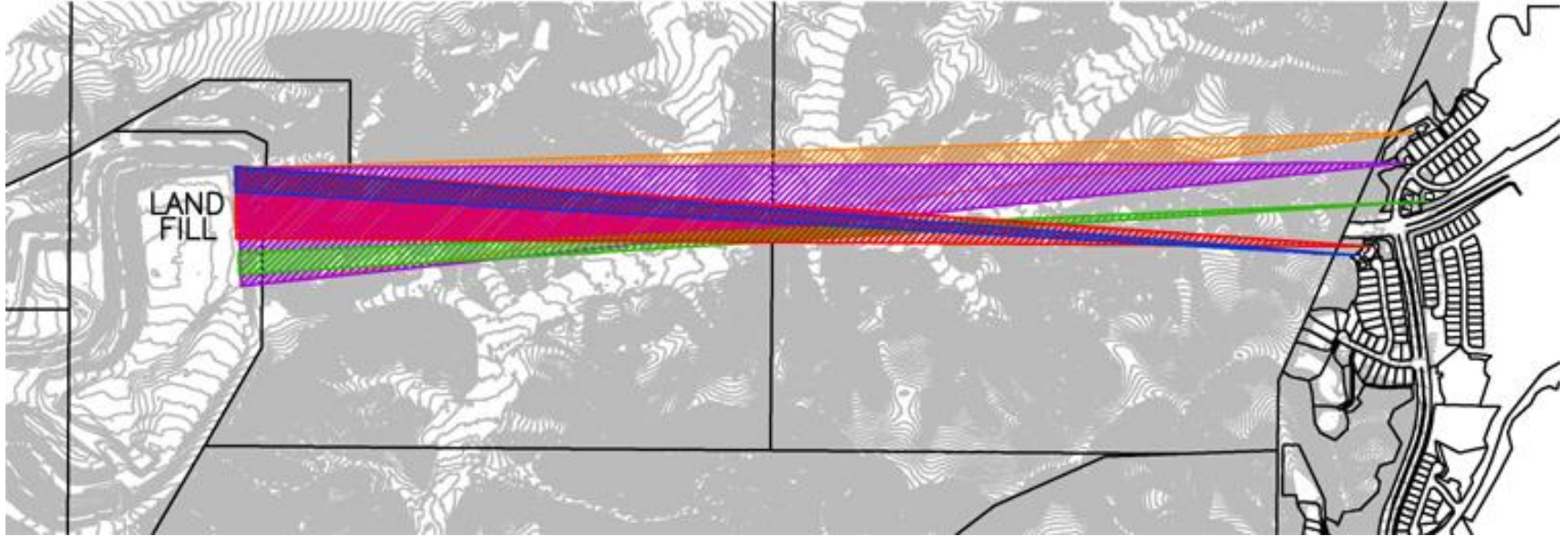
WASTE MANAGEMENT AROMATIC TREE GROVE



CITY OF SIMI VALLEY DEPARTMENT OF PUBLIC WORKS

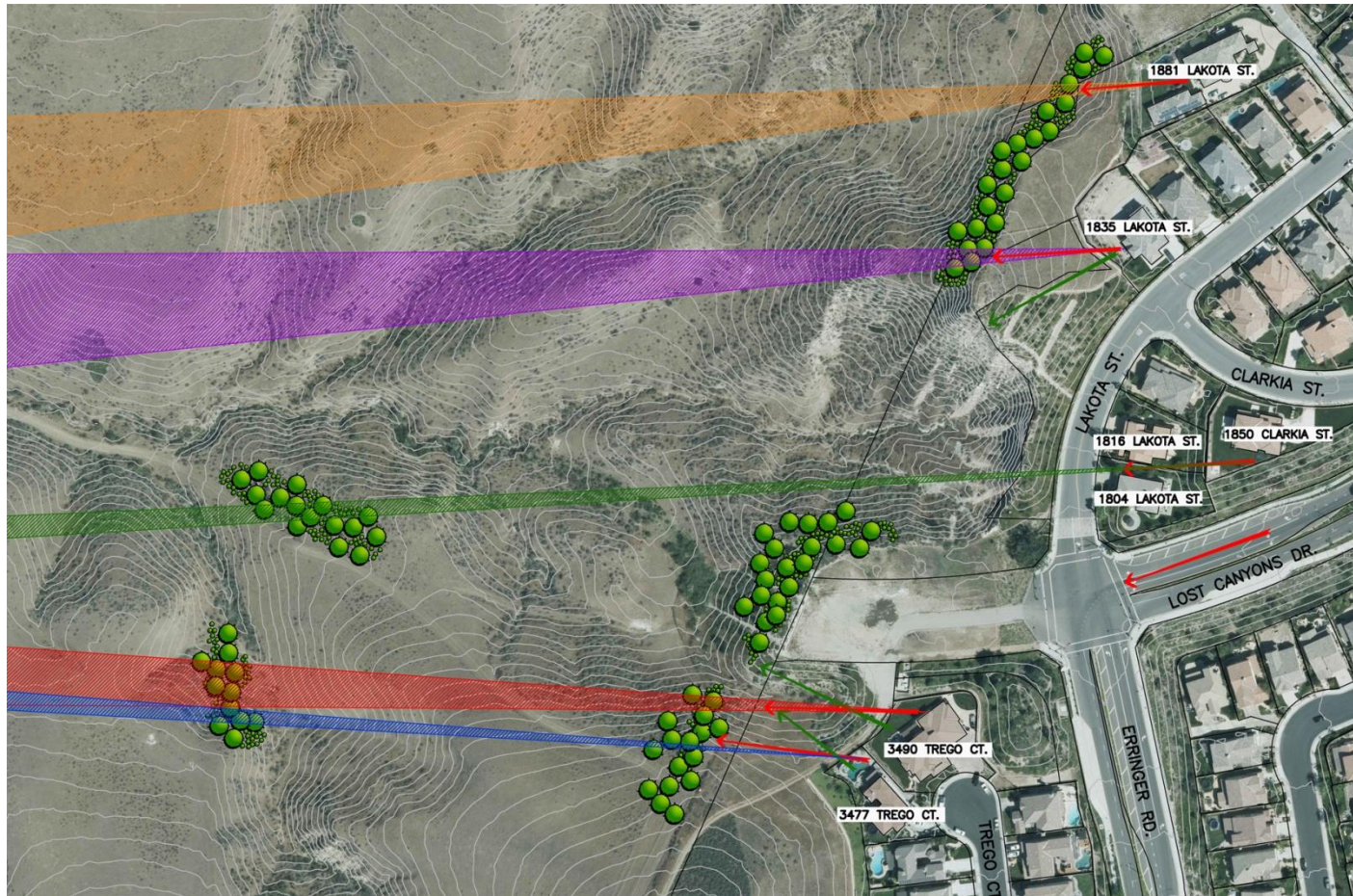
PREPARED BY JORDAN, GILBERT & BAIN LANDSCAPE ARCHITECTS

OVERALL VIEWSHEDS TO LAND FILL



VIEWS FROM HOMES TO LAND FILL

STRATEGIC TREE & SHRUB GROUPINGS



LEGEND

UNAPPEALING VIEWSHED



SCENIC VIEWSHED





Eucalyptus sideroxylon
Red Iron-Bark

30'-90' Tall
30'-60' Wide



Schinus molle
California Pepper

25'-40' Tall
25'-40' Wide



Quercus agrifolia
Coastal Live Oak

20'-70' Tall
30'-70' Wide



Pinus halepensis
Aleppo Pine

30'-60' Tall
20'-40' Wide



Salvia mellifera
Black Sage

3'-5' Tall
3'-6' Wide



Salvia clevelandii
Cleveland Sage

3'-5' Tall
3'-6' Wide



Rhus ovata
Sugarbush

4'-10' Tall
4'-10' Wide



Heteromeles arbutifolia
Toyon

8'-15' Tall
8'-15' Wide



Tagetes lucida
Mexican Marigold

3' Tall
4' Wide